



## Floyd – Northwest Georgia - Resilient Georgia Regional Grantee Annual Report Summer 2021

### Program Implementation Partners

Implementing programs and services in partnership with Region 1 Collaboratives

Action Ministries of Haralson	Ferst Readers of Chattooga & Polk	OurHouse Battered Women's Shelter
Boys & Girls Clubs of Murray Co.	LMO Pregnancy Center	Paxen/Eckerd Connect
CASA Haralson County	Murphy Harpst Children's Center	Pickens County Schools
Cedartown United Fund	NWGA Family Crisis Center	Salvation Army of Whitfield Co.

### Collaborative Lead Partners

- Representing each county in Region 1 as a Stakeholder
- Advocates for Children Chattahoochee Tech
- Carroll County Child Advocacy Center
- Catoosa Prevention Initiative Children in Need of Services Community Volunteer - Felicia Foster
- Dade County Schools
- Dalton Public Schools
- Family Alliance of Paulding
- Murray County Schools
- Northwest Georgia RESA
- Recovery Bartow
- Reinhardt University – Cauble School of Nursing & Health Sciences
- Walker County Board of Education
- Whitfield County Schools

### Regional & State Partners

Working in partnership with the Building a Region of Resilience Project

- Community Foundation for Northwest Georgia
- Georgia Center for Child Advocacy
- Georgia Department of Early Care and Learning
- Georgia Department of Education – PBIS Coordinators
- Georgia HOPE
- Global Impact/ Restoration Rome
- NW Georgia RESA – Wrap Around Service Coordinators



### Georgia Family Connection Collaboratives Region 1 – NW Georgia

Represented by Executive Directors and a Board Member Representative.

Bartow Collaborative, Inc.	Gilmer County Family Connection	Pickens County Family Connection
Catoosa Co. Family Connection	Family Connection of Gordon County	Polk County Council for Children and Families
Chattooga Family Connection	Haralson Coalition for Children, Youth and Families	Walker County Family Connection
DadeFIRST Family Connection	Murry County Family Connection	Dalton/Whitfield County Family Connection
Fannin County Family Connection	Paulding Family Connection Partnership	Georgia Family Connection Partnership
Rome-Floyd Commission on Children and Youth		

### Mini-Grantees

A Teen's Choice, Inc.	Cartersville City Schools	Good Neighbor Homeless Shelter	New Beginnings
Advocates for Children	Chattooga DFCS	Helping Hands, Ending Hunger, Inc.	North Georgia Family Partners
Affirming U	Chattooga Public Library	Highland Rivers	NWGA Family Crisis Center
Backpack Blessings	Craddock Center	Hill City Elementary School	Paulding Child Advocacy Center
Bartow Bookmobile	Destiny Independence	Kids Ferst	Paulding County Schools
Boys & Girls Club of NW Georgia	Ferst Readers	Mountain Wisdom	Recovery Bartow
CareLink	Gilmer Food Pantry		Gordon Co. Runaway Cmt.
			Salvation Army
			Summerville Main Street
			The Receiving Hope Center
			Three Circles
			Walker County Schools – Heartbeat Fund
			Whites Pediatrics



**Table of Contents *(Fill in page numbers when your report is complete)***

***About the Resilient Georgia Regional Coalition Grants..... 3***

***Coalition Mission..... 3***

***Summary..... 4***

***Leadership Team and Contributors ..... 4***

***Coalition Partners..... 5***

***Message from the Principal Investigator(s)..... 7***

***Key Impacts/Accomplishments ..... 8***

***Description of Trauma-Informed Care (TIC) and Adverse Childhood Experiences (ACES)-  
Related Efforts ..... 9***

***TIC/ACES Services – General .....9***

***Prevention/Intervention .....11***

***Advocacy and Policy.....13***

***Research.....14***

***Training .....15***

***Mini Grant Program .....16***

***Innovative Partnerships..... 16***

***Spotlight ..... 19***

***Inspired Action ..... 22***

***Income and Expenses/Financials..... 24***

***Other Donors/Funding Sources ..... 24***



## About the Resilient Georgia Regional Grants

***This section has been completed for you.***

[Resilient Georgia](#), in partnership with the Pittuloch Foundation, has been working with 12 cities across Georgia and the surrounding counties to provide a regional emphasis on trauma informed awareness and care, Adverse Childhood Experiences (ACEs) and child sexual abuse prevention training as a basis to transform systems and procedures crossing both public and private sectors.

- Resilient Georgia serves as a supportive and guiding resource during each region's planning and implementation process.
- These regional action plans each address the behavioral health needs of individuals birth through 26 years old and families in the community and surrounding counties using the Collective Impact framework (a diverse, robust and well-planned public-private partnership).
- Trauma Informed Care, ACEs and child sexual abuse prevention can be the basis for systemic changes in a community. Each region has identified how one or more of these content areas are delivered to diverse community members through formal training, education, marketing and communications.
- Round 1 grants were awarded in Nov 2019 to regional coalitions based out of Athens, Augusta, Macon, Savannah and surrounding areas. Round 2 grants were awarded in July 2020 to regional coalitions based out of Albany, Columbus, Rome, Thomasville and surrounding areas. Round 3 grants were awarded in March 2021 to regional coalitions based out of Clayton, Cobb, Gwinnett, Valdosta and surrounding areas.

## Coalition Mission

We are Georgia Family Connection Region 1, and we represent the 15 counties in NW Georgia. We have a unique vantage point - 15 separate but united collaborative organizations who are focused on helping build resilience in our communities. Our mission is to create a poverty- and trauma-informed and responsive region by building capacity, increasing community awareness, and influencing systems change, starting with our strategic annual plans.





## Summary

Building a Region of Resilience – NW Georgia’s approach is to implement capacity building that increases the impact of our community awareness activities and drives systems change. Our focus, a multi-generational approach that is compassionate, meets children and families where they are, identifies and meets needs and creates life-long resilience. Our priority framework incorporates Strengthening Families (5 protective factors) and Trust Based Relational Intervention (TBRI®). This effort is designed to increase our Collaboratives’ ability to achieve our mission now and in the future; increase community awareness; and advocate for systems change that improves resilience and impacts long-term outcomes for children, families, and communities. By building a region of resilience—which is directly aligned with our annual plans and strategies—we can increase the impact of our Collaborative strategies.



Top: Floyd Co. Glow Run  
Bottom: Chattooga drive through food drive

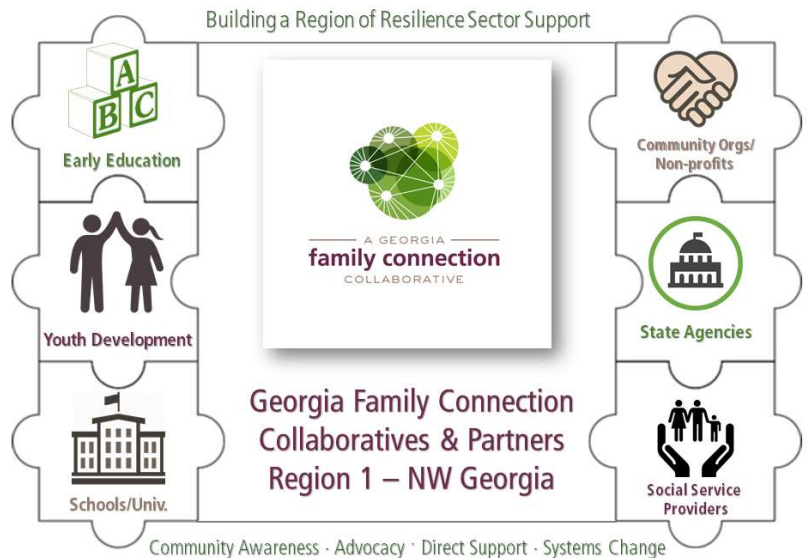
## Leadership Team and Contributors

**LaDonna Collins**, Executive Director  
Rome-Floyd Commission on Children and Youth (Fiscal Agent)

**Doug Belisle**, Executive Director  
Bartow Collaborative, Inc.  
(Lead Partner)

**Jacque Elwarner**, Executive Director  
Pickens County Family Connection  
(PTPN Chair)

**Gabrielle Stewart**, Regional Manager  
Georgia Family Connection Partnership  
(Project Manager)





## Coalition Partners

### Georgia Family Connection Collaborative Partners

- Phil Ledbetter, Coordinator, Catoosa County Family Collaborative, Inc.
- Maisha Ludy, Coordinator, Chattooga County Collaborative
- Martha Baker, Coordinator, DADE First – Family Connection
- Sherry Morris, Executive Director, Fannin County Family Connection
- Tiffany Gill, Executive Director, Gilmer County Family Connection Commission
- Heather Moss, Coordinator, Family Connection of Gordon County
- Jennifer Dobbs, Coordinator, Haralson Coalition for Children, Youth and Families, Inc.
- Pam Bishop, Coordinator, Murray County Family Connection
- Michele Craig, Executive Director, Paulding Family Connection
- Rhonda Heuer, Coordinator, Polk Family Connection
- Laura Beth Newsom, Coordinator, Walker County Family Connection
- Lori McDaniel, Executive Director, Children and Families First Community Partnership for Dalton/Whitfield

### County Lead Partners

- Amanda Carden, Director, Carroll County Child Advocacy Center
- Amy Denny, Associate Director of Adult Education, Chattahoochee Technical College
- Angela Moore, Director, Children in Need of Services – Polk Co.
- Barbara Hoffman, Executive Director, Recovery Bartow
- Felicia Foster, Community Volunteer – Chattooga
- Candy Hullender, Coordinator, Catoosa Prevention Initiative
- Jackie Taylor, Lead Social Worker, Dalton Public Schools
- Linda Verscharen, Executive Director, Family Alliance of Paulding
- Kimberly Parker, Assistant Professor of Nursing, Reinhardt University – Cauble School of Nursing and Health Sciences
- Kirk Cameron, Executive Director, The Craddock Center
- Kristin Barret, Social Worker, Dade County Schools
- Rachel Castillo, President/CEO, Advocates for Children
- Robin Samples, Director of Curriculum and Instruction, Walker County Board of Education
- Tara Jones, Lead Social Worker, Murray County Schools
- Tonya Plant, Wrap-Around Services & PBIS Director for NWGA Region Schools, NWGA RESA
- Tracie Simmons, Lead Social Worker, Whitfield County Schools



Top: Murray Co. Mini Grant distribution

Middle: Pickens Co. mini grant distribution – Boys & Girls Club

Bottom: Bartow Co. Give a Kid a Chance



### Regional Partners

- Lea Bennett Fantom, Region 1 Prevention Coordinator, Georgia Center for Child Advocacy
- Mary Margaret Mauer, Executive Director, Restoration Rome
- Suzanne Harbin, Director of Early Childhood Initiative, Community Foundation for NW Georgia
- Glenda J. Davis-Canteen, Early Education Community Partnership Regional Coordinator (Northwest), Georgia Department of Early Care and Learning
- Dr. Robbie Y. Vincent, Coordinator, PBIS and School Climate, Northwest Georgia RESA
- Anna Giddens, BS, Training and Implementation Team Lead, Community Support Specialist, District 5, Georgia HOPE
- Shannon Weist, Ed.S., PBIS Program Specialist, Positive Behavior Interventions and Supports (PBIS) Unit, Office of Teaching and Learning, Georgia Department of Education
- Rebecca Blanton, School Climate Transformation Grant Manager, Project AWARE Grant Manager, Teaching and Learning, Georgia Department of Education

### Program Implementation Partners

- Alan Kiker, Board Chair, Action Ministries - Haralson
- Angela Moore, Coordinator, Children In Need of Services – Haralson County
- Belinda Bentley, Executive Director CASA – Haralson County
- Debbie Ross, Regional Program Coordinator, Ferst Readers Chattooga & Polk
- Donna Grogan, Executive Director, Cedartown United Fund
- Heather Blackmon, Executive Director, LMO Pregnancy Center
- Kelsei Pullen, Executive Director, Our House Battered Women’s Shelter
- Kayla Kinser, School Social Worker, Pickens County Schools
- Kim Stafford, Development Director, Boys and Girls Club Murray County
- Scott Fuller, Stewardship and Development Officer Advancement, Murphy Harpst Children Center
- Patricia Thompson, Business Manager, Salvation Army - Whitfield
- Tommy Baker, Coordinator, Paxen/Eckerd Connect



Top: Paulding Co. pinwheel planting  
Middle: Dade Co. Civic Dinner  
Bottom: Polk Co. pinwheels for prevention



## Message from the Principal Investigator(s)

*“Pickens County Family Connection is extremely proud to be part of the working being done by Resilient Georgia. Building a Region of Resilience, with its emphasis on creating a trauma-informed and poverty-informed community, has allowed leaders and other professionals in the county to bring about needed change for our children and families. As Coordinator, I have received multiple trainings and additional resources to share with the community, which has given a new perspective to everyone, especially useful as we adjust to life after the pandemic.”*

Jacque Elwarner, Executive Director,  
Pickens Co. Family Connection & Peer-to-Peer Chair

*“The BRR project has had a positive impact in the communities of Walker County. Education, resources, and relationships have been strengthened and we look forward to growing even more. We are grateful for the opportunity to participate!”*

Laura Beth Newsom,  
Walker Family Connection



Left: Catoosa Co. Darkness to Light virtual training  
Right: Gordon Co. back to school drive  
Bottom: Haralson Co. Peers from Your Haven

*“Because of the Resilient Georgia Grant and Region 1 Building a Region of Resilience, the Catoosa County Family Connection Collaborative was able to offer FREE parenting classes, called: “Positive Parenting” during the Fall of 2020 and Spring, 2021.*

*Participants were asked which of the parenting techniques taught in the program they would use at home. Parents indicated several different useful techniques such as: using “I message” to communicate thoughts and feelings; role-modeling desired behaviors for their children; taking deep breaths or time-outs to calm down; using self-talk; problem-solving with their children; and using written contracts for the family.”*

-Phil Ledbetter, Executive Director,  
Catoosa Family Connection

*“Partnering on the Building a Region of Resilience Project with Family Connection in Region 1 to deliver online screenings of the movie Resilience has been an excellent experience and one that I look forward to continuing to grow! I have had the pleasure of getting to know the Coordinators in this area in new ways and learning about the distinct needs of the communities they represent, allowing me to tailor the discussion portions of the presentation. The Coordinators have been welcoming, flexible, and supportive- even when there have been technical issues! Online movie screenings present several challenges, not only in technical execution but also in promotion and generating interest. It has been clear from the attendance and engagement levels at each of these events that the Coordinators have earnestly encouraged their communities to join in this movement.”*

-Lea Bennett Fantom,  
Georgia Center for Child Advocacy

Top: Whitfield Co. Sharing is Caring  
Bottom Left: Chattooga & Walker  
with Helping Hands Ending Hunger,  
Inc. food distribution  
Bottom Right: Gilmer Co. Mini  
Grant – Craddock Center



## Key Impacts/Accomplishments



**Capacity Building** – The leadership of each Georgia Family Connection collaborative in Region 1 has been trained to deliver an evidence-based/informed or best/promising practice curriculum related to trauma and/or poverty. These include TBRI Caregiver Training (2 trainers), Connections Matter (7 trainers), Bridges out of Poverty (3 certified, 4 trained), Darkness to Light (1 trainer) and Standards of Quality for Family Strengthening and Support (1 trainer and 15 certified for 2 years). Over the course of the year, 36 capacity building activities were implemented with Executive Directors, Board Members and Collaborative Partners – including school systems, social service providers and youth development practitioners.



**Community Awareness** - The region has leveraged their learning to create Trauma 101 and Poverty 101 workshops that build awareness and encourage collaborative partners to seek additional training and capacity building in one of the above-mentioned programs (15 total trainers trained, 13 trained to facilitate both workshops). The graphic on the right is an overview of this year's implemented activities.



**Systems Change** – We are promoting change in the current system of services in our region by aligning annual strategic plans and strategy implementation with trauma- and/or poverty-informed best practices. Most counties will leverage or create strategy teams and workgroups to guide this work and provide oversight. This strategy alignment will be reflected in our evaluation plan.

## ACTIVITY SNAPSHOT



### 52 Advocacy Events

Activities that promote understanding of ACEs, poverty- and/trauma-informed approaches and influence systems change that incorporates the use of evidence-based, best/promising practices.



### 29 Prevention Education Activities

Increasing knowledge and understanding through evidence-based trainings: Darkness to Light, QPR, Nurturing Parenting.



### 15 Civic Dinners

Community discussions and feedback for improving community supports to children, parents and families.



### 6 Screenings

Screening of film chronicling the promising beginnings of a national movement to prevent childhood trauma, treat Toxic Stress, and greatly improve the health of future generations.

# 7,300

## Participants Engaged

Participants in our awareness activities include Collaborative and Community Partners, Social Service Providers, Parents/Caregivers, Youth and Young Adults.





Additionally, we hosted our first Stakeholder Meeting with Family Connection Executive Directors, Lead Partners from each county and a governing body representative from each collaborative. The meeting was host to 42 participants. In June, we began working with Family Connection Executive Directors in May to map strategy activities to our priority and other initiatives for our area including the Division of Family and Children’s Services’ Child Abuse and Neglect Prevention Plan priorities for Regions 1 & 3, the TBRI Georgia Initiative, Get Georgia Reading and the Department of Early Care and Learning’s Birth to 5 Initiative.

## Description of Trauma-Informed Care (TIC) and Adverse Childhood Experiences (ACES)- Related Efforts

### TIC/ACES Services – General

The Building a Region of Resilience initiative promotes understanding of Adverse Childhood Experiences and the use of Trauma-informed Care to build community resilience. The focus of the initiative in the first 6 months was to build the capacity of our leadership. Our goal being to prepare them to raise awareness and advocate for systems change that supports resilience in our children and families. To build their capacity, our Family Connection Coordinators participated in self-directed activities, including book studies, webinars, lunch and learns, conferences and discussions. In addition, coordinators participated in trainings identified in our RFP and additional conference and learning opportunities hosted by Georgia Family Connection Partnership and other state and regional agencies.

*\*A full detail of the number and types of activities implemented can be found in Annex A: Capacity Building Activities.*



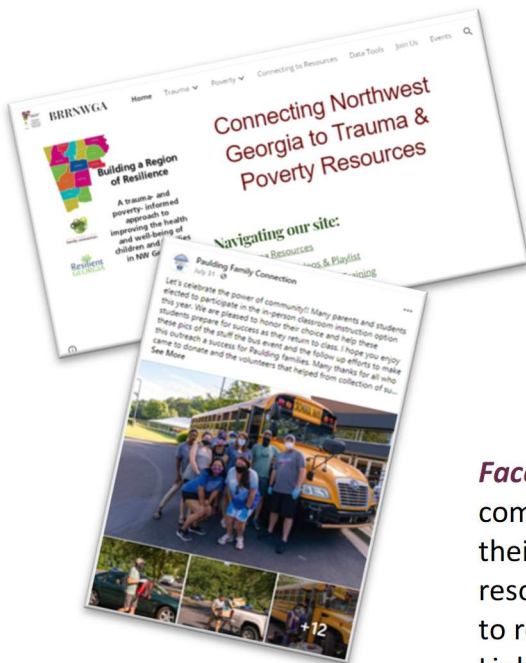
With this learning, we have created:

***Poverty 101 Workshop: A Case for a Poverty-Informed Approach: Understanding, Perspective & Resilience*** - the purpose of this presentation (its associated activities and discussions) is to increase awareness and understanding of root causes of poverty and the perspective and communication styles necessary to create resilience in families and our communities. Our goal: to encourage participants to become poverty- informed and/or poverty competent in order to build resilience. Participants of this workshop are encouraged to continue building their knowledge and skill sets

through additional trainings and adjust program implementation to align with best practice.



**Trauma 101 Workshop: A Case for a Trauma-Informed Approach: Trauma, Brain Development, Behavior and Resilience** - the purpose of this presentation and associated activities and discussions is to increase awareness and understanding of trauma and its effects on children, brain development, behavior, families, and our communities. Our goal: to encourage participants to become trauma informed and/or trauma competent. Participants of this workshop are encouraged to continue building their knowledge and skill sets through additional trainings and adjust program implementation to align with best practice.



**Building a Region of Resilience website**

([www.ResilienceNWGA.org](http://www.ResilienceNWGA.org)) – designed to build understanding, capacity and skill sets to address trauma/poverty and the needs of children, parents, and families in crisis. This site serves as our comprehensive tool kit, allowing all of our partners to access information and resources in one place. The contents align with the Poverty and Trauma 101 Workshops and provides easy access to additional information and training opportunities, especially those provided in the Resilient Georgia Roadmap.

**Facebook Group** - This private Facebook Group is intended to be a community of learning and support that provides our partners and their staff the opportunity to share ideas, information, and resources; ask for and receive support and encouragement; connect to resources; and build resilience in order to inspire it in others. Link to FB Group: [www.facebook.com/groups/resiliencenwga/](https://www.facebook.com/groups/resiliencenwga/). Currently 45 members.

Our priority framework for poverty- and trauma-informed care incorporates Strengthening Families (5 protective factors) and Trust Based Relational Intervention (TBRI®).



**Trust Based Relational Intervention (TBRI®)** – Two of the coalition’s leaders were trained as TBRI® Practitioners in October 2020. In addition to being able to facilitate TBRI® Caregiver Training, they are also able to support community partners in implementing the intervention within their organization and with the children and families they serve. They both represent the initiative in the Global Impact, Inc. (Restoration Rome) TBRI® Georgia initiative and will implement a TBRI® Caregiver Training for the coordinators of Region 1 and the Georgia Family Connection Network August – November, 2021.

**Standards of Quality in Strengthening Families** - 14 Executive Directors and the Regional Manager for Georgia Family Connection were certified in the standards this year. This certification allows integration and operationalization of the principles of Family Support and utilize the Strengthening Families Framework, a research-based evidence-informed approach using 5 Protective Factors: parent resilience, social connectedness, increased understanding of parenting and child development, concrete support in times of need and social and emotional competence of children. Our Fiscal Agent representative received certification as a trainer of the standards.

### Prevention/Intervention

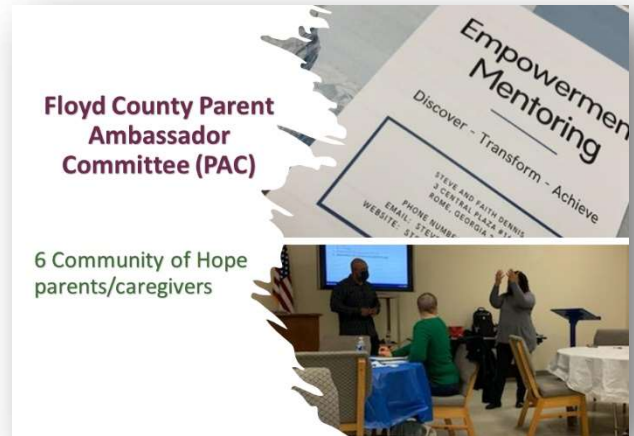
To reduce instances of child abuse/neglect and suicide, promote positive mental health and reduce risk taking among youth and young adults, the coalition implemented the following educational prevention activities:



**Parent Café:** This program includes parental training workshops and the distribution of literature each quarter to parents/guardians to build parenting capacity. Topics are designed to promote positive parenting and decrease child abuse and neglect. Childcare is provided and youth activities are aligned with the learning the parents receive. Families are encouraged to duplicate the activities at home as a way of building parental/family engagement.



**Parent Ambassador Committee:** The committee holds regular meetings of parent leaders from Rome/Floyd’s Community of Hope. During meetings, parents participate in personal development classes which provide an increased awareness of and aid in building stronger relationships with community partners such as DFCS, law enforcement, health insurance agencies, mental health providers and family resource center representatives. Participants are encouraged to serve as community ambassadors and peer leaders, connecting their community to needed programs and services.



**Teen Maze:** This interactive, experiential learning event is designed to give students the opportunity to experience real life consequences of risky behavior in a safe setting with a focus on goals of high school graduation and beyond as a deterrent to engagement in risky behaviors. The Teen Maze was implemented virtually by Murray and Whitfield Counties to 2,410 high school sophomores.

**Concrete Support Programs:**

In alignment with the Strengthening Families 5 Protective Factors, our Family Connection Collaboratives work with partners to ensure that children and families have access to concrete supports in times of need. We facilitate support programs and events with Collaborative partners that provide children and families with back-to-school services and supplies, holiday toys and gifts, books, support for utilities, household items and meals. We know that intervening in this way pulls families out of crisis and improves family stability.

<u>Support Program</u>	<u>Participants</u>
CHINS Support	11
Back to School Haircuts	60
Book Distribution	265
School Supplies	840
Christmas Campaigns	3,904
Food Distribution	26,369

*\* A full detail of the number and types of items distributed can be found in Annex B: Family Support Material Distribution.*



## Advocacy and Policy

As we work towards systems change, our Family Connection Collaboratives have advocated for new, more compassionate approaches to working with our children and families in crisis. Our Collaboratives have embedded these approaches in their strategies, and we encourage our partners to adjust internal policies and protocols to reflect best practice. Through town-halls and discussions, workshops, and experiential activities, Civic Dinners, as well as viewings of the documentary *Resilience*, we have increased understanding of ACEs, trauma- and poverty-informed approaches and the power of resilience. Our advocacy activities included parents, grandparents and kinship caregivers, board members, strategy team partners, community partners, social service providers, faith-based communities, education and academic organizations, and the community at large. Dinners in Fannin and Whitfield counties included leaders from the Latinx community.

Each county hosted a Civic Dinner using the Nurturing Communities (8 dinners) and Parenting in a Pandemic question formats (7 dinners). These dinners fed and engaged 351 community members, providing much needed feedback and information to our Family Connection Collaboratives.



*"This group was so passionate on this topic that many stayed afterwards and planned additional meetings to address items brought up in the discussion. Great discussion! We are definitely planning to do more Civic Dinners in the future with different groups."*

- Lori McDaniel, Whitfield

Dinners with community members in which small group discussions are held to explore the aspects of safe, stable, nurturing relationships and environments essential to the healthy development of all children using [cividdinner.org](http://cividdinner.org)'s Nurturing Communities and Parenting in a Pandemic question formats.



## CIVIC DINNERS

*"The main concerns discussed were the sustainability of our new Recovery Center Organization and insufficient amount of housing in our area."*

-Jennifer Dobbs, Haralson

*"Several responses were about ensuring that all 3 & 4 year olds had access and attended a Pre-K or Head Start programs. Others said they felt like education needed to start at home after birth and there also needs to be access to affordable, quality-rated childcare beginning after birth until they are in school. One big concern is the challenges all children will face educationally due to the pandemic and how to close the gap on the time and learning that was lost over the past year."*

- Jacque Elwarner, Pickens





Through a partnership with Georgia Center for Child Advocacy, our coalition was able to host 6 viewings of the documentary “Resilience: The Biology of Stress and the Science of Hope.” The film reveals toxic stress can trigger hormones that wreak havoc on the brains and bodies of children, putting them at a greater risk for disease, homelessness, prison time, and early death. While the broader impacts of poverty worsen the risk, no segment of society is immune. *Resilience* also demonstrates ways to fight back, re-counting promising beginnings of a national movement to prevent childhood trauma, treat toxic stress, and greatly improve the health of future generations. The post viewing discussion engages participants in conversation debriefing the content of the film and the impact of trauma on our communities. Participants are encouraged to brainstorm ideas for building resilience within their own sphere of influence.

Through a partnership with the Department of Education, the Regional Education Service Agency and Georgia HOPE, we will be implementing a wellness incentive program for school administrators and staff in our region. Georgia HOPE will facilitate a compassion fatigue training this fall with school administrators and offer onsite implementation of the training for teachers, counselors, and staff. Content from the training will be added to our website and shared via social media. School administration will be encouraged to incorporate wellness programs modeled after Walker County School’s #wellness program to reduce compassion fatigue and increase their staff’s understanding of secondary trauma and its contribution to burn-out. Each month, we will create video vignettes on “Being Your Own Life SAVERS” covering topics like silencing your mind, affirmations, visualization, exercise, reading and scribing (journaling). During the month following each video release, we will advocate for participants to implement these suggestions and share their experience. Participants implementing suggestions from the video will be entered to win a gift card to purchase supplies for wellness. Three gift cards will be given away each month during the school year.

*\* A full detail of the numbers and types of participants engaged in Advocacy Activities can be found in Annex C: Advocacy Activities*

## Research

This year’s evaluation plan included collecting process data monthly on capacity building and awareness activities participated in or facilitated by each collaborative, as well as participant numbers and types. In addition, quarterly reporting on each collaborative’s annual plan/strategy implementation was used to provide additional detail on direct service to children and families. Through this data collection process, we have identified challenges with the methods used and will be revamping our collection efforts.



Utilizing Kids Count data and trends, the coalition worked with Family Connection Collaborative leaders and a Lead Partner from each county to determine our regional priority “to promote understanding of trauma and poverty using a common language and best practices in strategy implementation.” Data trends and tables were distributed in a workbook for participants of our first Stakeholder Meeting and used as the foundation for discussion. Through the course of our meeting, stakeholders gave feedback on how the data was reflected in their communities and talked about our families’ greatest challenges and barriers. We are now mapping our collective action against those priorities, the protective factors each activity addresses and links to any regional or state initiatives. Additionally, we are working with the Georgia Family Connection Partnership’s regional evaluation consultant to develop a comprehensive evaluation plan that will position us to collect and track process and outcome data showing our progress towards local and regional community awareness and systems change. We will continue to use our Kids Count data and trends to mark long-term progress towards our network’s mission to improve the health and well-being of children and families.

### Training



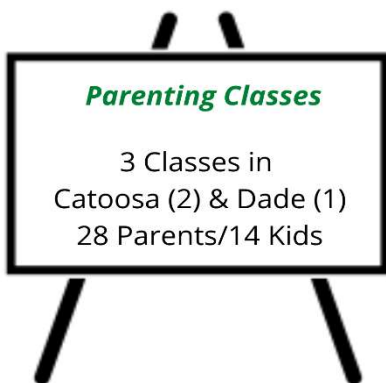
**Darkness to Light**  
11 Trainings Implemented  
161 Participants Served  
9 Counties

**Darkness to Light – Stewards of Children®:** is an evidence-informed, award-winning two-hour training that teaches adults to prevent, recognize, and react responsibly to child sexual abuse. Through interviews with child sexual abuse survivors, experts, and treatment providers, Stewards of Children® teaches adults practical actions they can take to reduce instances of child sexual abuse in their organizations, families, and communities.

**Mental Health First Aid:** is a skills-based training course that teaches participants about mental health and substance-use issues.



**Mental Health 1st Aid**  
45 Walker County  
Participants Served



**Parenting Classes**  
3 Classes in  
Catoosa (2) & Dade (1)  
28 Parents/14 Kids

**Parenting Classes:** Positive Parenting and Nurturing Parenting classes that are family-centered and trauma-informed were implemented to build nurturing parenting skills. Parents are provided a safe space to practice new parenting skills, increase their understanding of stages of development and social-emotional growth of children, while forming social connections with other parents.



**Question, Persuade, Refer (QPR):** a training in which participants learn how to recognize the warning signs of a suicide crisis and how to question, persuade, and refer someone to help.

*\* A full detail of the numbers and types of participants trained can be found in Annex D: Training Details*



### Mini-Grant Program

The Building a Region of Resilience initiative leveraged \$29,900 in funding from Resilient Georgia to invest in community partners providing programs and services directly aligned with our poverty/trauma-informed initiative and strategies to improve child and family health and wellbeing. Distributed via localized, competitive grant programs, 20 community partners received \$400 - \$2,500 in support of program/service implementation. Mini-grants will support trainings, purchasing of school and program supplies, snacks and meals, books, and provide scholarships to after school/summer camp and monthly book clubs. Grantees received awards and began implementing in May and will report on service/program delivery this fall. A full reporting of the impact of this program will be included with our mid-term report.

*\* A full detail of the grants awarded by amount and county can be found in Annex E: Mini Grantees*



Top: Pickens Co. Mini grant  
Bottom: Floyd co. Mini grant

### Innovative Partnership

#### Overview of Partnership:

Partnered with *Wraps Styling Salon & Signature Styles* to distribute books and encourage children to read during their hair appointments. Barbers/beauticians promote literacy and incentivize reading between visits. They connect families to the collaborative and their partners for resources and support. This partnership introduces us to different neighborhoods and gives us greater access to families of color. Salons promote books that celebrate differences and diversity, while fostering life-long learning.



#### Next Steps:

Feedback from the pilot in Rome-Floyd Co. has been positive and the program is being duplicated in Haralson Co. in year 2. As part of our evaluation planning, we will collect feedback from barbers/beauticians and parents on the impact of the program, as well as demographics of those served to see if it expands the reach of our project and increases numbers of books read.





## Opportunities and Future Goals

Our primary goal for the future is to improve our region's understanding and use of trauma- and poverty-informed approaches. Our desired long-term outcome is the sustained improvement in health and well-being of children and families, as well as increased community resilience. Our greatest opportunity is our inclusion in the Georgia Family Connection network. The network provides dedicated technical assistance, connectivity between counties, regional and state partners, and technical assistance to incorporate best practices in strategy development/implementation and governance.

In the next year, our Family Connection Collaboratives will work on deepening partnership with the Lead Partners in each county, engaging them to drive systems change within the collaborative and influence it within their own organizations. Additionally, we will be strengthening our relationships with regional partners in an effort to create synergy between our initiatives, specifically:

- Division of Children and Families Child Abuse and Neglect Prevention Plan with a focus on the priorities for their regions 1 and 3.
- Department of Early Care and Learning's Birth to 8 Collaboratives and their work to improve early literacy and parental engagement.
- Global Impact/Restoration Rome's TBRI® Georgia Initiative to promote the intervention state-wide.

By leveraging our access to the Georgia Family Connection Partnership's regional evaluation consultant, we will develop a comprehensive evaluation plan that positions us to collect and track process and outcome data showing our progress towards local and regional systems change. The Executive Directors of our Family Connection Collaboratives will create the initial draft and present it to our stakeholders for feedback in the fall. We will utilize the evaluation plan to track our progress, while building the capacity and understanding of our stakeholders to drive systems change. As part of that process, we will tweak our current data collection methods to align them with best practice.

As we move forward, we will continue leveraging community feedback through Civic Dinners. By implementing these focused and informal conversations, we were able to engage new sectors and get feedback on community challenges from partners and parents/caregivers we otherwise would not have reached. In 15 Civic Dinners, we heard from school bus drivers, parents, grandparents and kinship caregivers, business owners, school counselors, direct service providers, and elected officials. Our Family Connection Collaboratives are



Top: Fannin Co. Civic Dinner  
Bottom: Murray Co. Civic Dinner



leveraging the feedback of those discussions to drive future decision-making and as jumping off points for long-term relationships and engagement in collaborative strategies.

Parent Advisory Councils/Committees are being formed in several counties to ensure that we are lifting the voices of those we intend to serve. Our family engagement efforts are specifically designed to incorporate their voices in decision-making on strategy and activity implementation in those Family Connection Collaboratives.

Next year, we will leverage teaching and technical assistance from Georgia Family Connection Partnership (GaFCP) to assist us in hosting community conversations on race, equity, and inclusion (REI). Each of the Family Connection Executive Directors participated in GaFCP facilitated REI trainings: *Tenants of Difficult Conversations*, *REI Terminology and Utilizing the Kids Count Disaggregated Data Tool for Strategy Decision-making*. We will continue to increase our capacity through trainings, while engaging GaFCP REI facilitators in implementing conversations, trainings, and activities in our region.

Lastly, we are working to broaden stakeholder involvement to include community representatives, with a focus on parents, youth, and young adults. As with the Parent Advisory Committees, we see this as a way of incorporating diverse perspectives into decision-making, positioning us to better serve our communities by ensuring our activities reflect six keys of access.

 ACCESS	THE SIX KEYS TO ACCESS
 AWARENESS	Population is informed that the service exists & what it provides
 AFFORDABLE	Prices of services meet population's ability to pay
 ACCESSIBLE	Location of supply geographically aligns with population needs
 AVAILABLE	Size or volume of the supply meets population needs
 ACCOMMODATING	Delivery of service meets population needs
 ACCEPTABLE	Characteristics of service providers & population are receptive to each other

## Spotlight

### ***Building Resilience in Action: Floyd County Parent Ambassador Committee & New Partnerships***

#### **Parent Ambassador Committee**

*connecting parents and fostering entrepreneurship*

##### **Parent Ambassador Committee**

The Collaborative’s partners provide professional development, life-skills, and leadership capacity building in monthly meetings with parents and caregivers in their Community of Hope.

##### **Parent Engagement**

PAC parents provide feedback for Collaborative decision-making on challenges to stability and barriers to access and success, while promoting resources among their peers.

##### **Parent Success**

A PAC member, Christina C., was so motivated from participating and applying newly learned principles from the personal development classes that she is starting her own business, The Bridge. The Bridge will offer classes from the owner, a mother who has been clean for many years, lost, but regained custody of her kids and is a recently trained TBRI® Practitioner. She has been providing parent support group sessions at Restoration Rome and Living Proof Recovery. The Collaborative will support The Bridge by referring parents to the class, offering mini grants, and providing and teaching classes when needed.

#### ***Partnership Development: Connecting partners to support family engagement***

With funding from Resilient Georgia, 70 families, including our Parent Ambassadors attended a family fun day at the Rome Braves Game. Through a partnership with the Rome Braves, the collaborative was also able to provide free tickets to the families for every Sunday home game this summer. One parent stated, *“I’ve always wanted to be able to give my children experiences that I did not get! You all are providing the opportunity for us to go to a game, then making it possible for me to take my entire household to Rome Braves Sunday Home Games, is unbelievable! I get to laugh with my kids and be silly with them!”*

Two community partners, Rome Floyd Department of Juvenile Justice & Exchange Club Family Resource Center, who supported the family fun day,





were connected by the Collaborative to the Rome Braves to establish their own relationship and provide a family fun day at Sunday games for the families they serve!

### ***Building Resilience in Action: Fannin County Family Connection's Family Resource Center***

By Sherry Morris, Executive Director, Fannin County Family Connection

Operating a Family Resource center enables the staff many opportunities to work directly with families who are in crisis. We provide boxes of food to those in need, operate a clothing closet and conduct resource consultations in order obtain more services for individuals and families. Last Fiscal Year (ending on June 30), we served just over 20,500 visits. The doors re-opened at the Resource Center for face-to-face visits on Monday, May 3 and there have been hundreds of interactions since. But it's the eight families who needed us most that truly bring home our mission of "A community of healthy and safe families and children." We have assisted four families to find a safe haven from the ravages of physical abuse that had been suffered during the pandemic. When family members return for a visit no longer wearing a hungry, gaunt face and visible bruises, we all breathe a sigh of relief, and the smiles are unstoppable. Getting a hug from the children who are involved is one of the greatest gifts of all.



There are times when it's important to know someone truly cares about your situation. We have served three individuals who felt they had nowhere else to turn. One mother lost a child in a terrible car accident many weeks ago that is still under investigation and the family has no resolution. The family has not been able to conduct a funeral for their loved

one. No answers are forthcoming. We have been a shoulder to cry on and we've been a resource to find legal advocacy. We have been the provider of food and clothing for two grandchildren who unexpectedly arrived at the grandparent's home.

One mother witnessed the brutal murder of her child. Again, we've been the comfort in the storm and the resource that assisted in locating grief counseling and mental health services. And for one





person, we were the first visit after being released from the hospital after a raging partner grabbed a knife and proceeded to inflict seven wounds. Again, we have found legal advocacy, mental health services, and follow-up medical care.

And our most poignant story, not only of post-Covid services, but in the history of the organization is one with an uncertain outcome. An individual was clearly in distress upon visiting the pantry and resource center. The hug which is encircled me from her arms was the most desperate cry for help I've ever encountered. This beautiful young woman had escaped from bondage, ran, hidden, walked for miles, and somehow wound up on our doorstep. She had been the victim of trafficking. Her body was riddled with evidence of abuse, including ligature marks on her extremities and her feet were covered in blisters from the hot pavement and the long walk. We assisted in reuniting her with family members and connecting her to medical care, and referrals for mental health services along with legal and law enforcement referrals. While we have attempted to maintain contact, we have been unable to locate her following her visit. We hope her life situation has greatly improved, and we are grateful that we were able to lend assistance in her moment of need.



These situations have taken place in a small, rural community. While planning to reopen post-Covid, staff constantly discussed the probability of needs which would greatly exceed our capacity. And, unfortunately, we have received requests for services beyond our scope.

While busier than ever delivering pantry services during the height of the pandemic, staff did participate in many training opportunities afforded to us through grant funds received from Resilient Georgia. The knowledge gained through these training courses was then transferred and shared with other staff members and volunteers. This is truly how the organization has been able to cope and to assist when the needs of our community have been at their greatest.

## Newspaper Articles and Press from our Project

ACEs Prevention is a Priority for Rome Floyd Commission on Children and Youth :  
[https://www.northwestgeorgianews.com/rome/news/local/april-is-child-abuse-awareness-month/article\\_1e9e7d50-916f-11eb-b940-dfde4b184916.html](https://www.northwestgeorgianews.com/rome/news/local/april-is-child-abuse-awareness-month/article_1e9e7d50-916f-11eb-b940-dfde4b184916.html)



ACEs Connections Matter Article – Floyd -

[https://www.northwestgeorgianews.com/rome/news/local/aces-prevention-a-priority-for-rome-floyd-child-advocates/article\\_2a90679c-98e8-11eb-a7d1-5b1f773311c0.html](https://www.northwestgeorgianews.com/rome/news/local/aces-prevention-a-priority-for-rome-floyd-child-advocates/article_2a90679c-98e8-11eb-a7d1-5b1f773311c0.html)

Child Abuse Prevention is a Community Solution - Floyd:

[https://www.northwestgeorgianews.com/rome/news/local/child-abuse-prevention-is-a-community-solution/article\\_db954ec0-9d45-11eb-8711-c79d287ded8a.html](https://www.northwestgeorgianews.com/rome/news/local/child-abuse-prevention-is-a-community-solution/article_db954ec0-9d45-11eb-8711-c79d287ded8a.html)

Citizen of the Week: Jackie Taylor does Whatever Needs to Be Done for Sharing is Caring

Community Christmas – Whitfield: [https://www.dailycitizen.news/opinion/editorials/citizen-of-the-week-jackie-taylor-does-whatever-needs-to-be-done-for-sharing-is/article\\_903b9117-1543-53fb-8528-6614f7d83e41.html](https://www.dailycitizen.news/opinion/editorials/citizen-of-the-week-jackie-taylor-does-whatever-needs-to-be-done-for-sharing-is/citizen-of-the-week-jackie-taylor-does-whatever-needs-to-be-done-for-sharing-is/article_903b9117-1543-53fb-8528-6614f7d83e41.html)

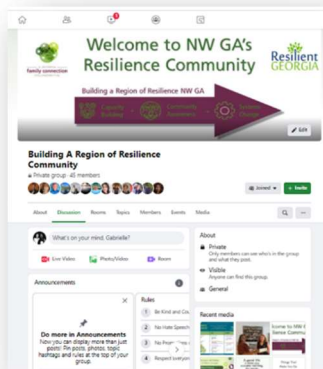
Dalton Highschool JROTC Cadets help with Sharing is Caring – Whitfield:

[https://www.dailycitizen.news/news/local\\_news/dalton-high-school-jrotc-cadets-help-with-sharing-is-caring/article\\_bd805ab5-536c-57ba-b717-cfa5f6346774.html](https://www.dailycitizen.news/news/local_news/dalton-high-school-jrotc-cadets-help-with-sharing-is-caring/article_bd805ab5-536c-57ba-b717-cfa5f6346774.html)

Reach Out to Prevent Child Abuse - Floyd:

[https://www.northwestgeorgianews.com/rome/opinion/columns/reach-out-to-prevent-child-abuse/article\\_8676c616-957b-11eb-8c37-3faebb6dfd2d.html#tncms-source=login](https://www.northwestgeorgianews.com/rome/opinion/columns/reach-out-to-prevent-child-abuse/article_8676c616-957b-11eb-8c37-3faebb6dfd2d.html#tncms-source=login)

## Inspired Action



All are welcome to join or support our Building a Region of Resilience. We encourage interested parties to:

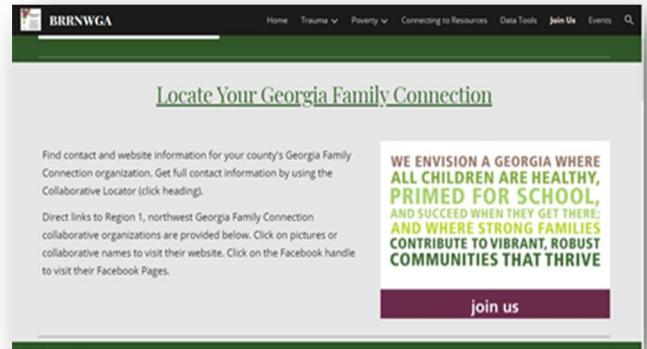
**Join us on Facebook:** This private Facebook Group is intended to be a community of learning and support that provides our partners and their staff the opportunity to share ideas, information and resources; ask for and receive support and encouragement; connect to resources; and build resilience in order to inspire it in others. Link to FB Group:

[www.facebook.com/groups/resiliencenwga/](http://www.facebook.com/groups/resiliencenwga/)

**Visit our website - explore and provide feedback:** To ensure our website is up to date; we invite you to review it and give us feedback. Share your ideas on additional resources, tools, websites, books and videos, or send us your upcoming events to add to our calendar. Web address: [www.ResilientNWGA.org](http://www.ResilientNWGA.org) Feedback can be sent to [gabrielle@gafcp.org](mailto:gabrielle@gafcp.org).



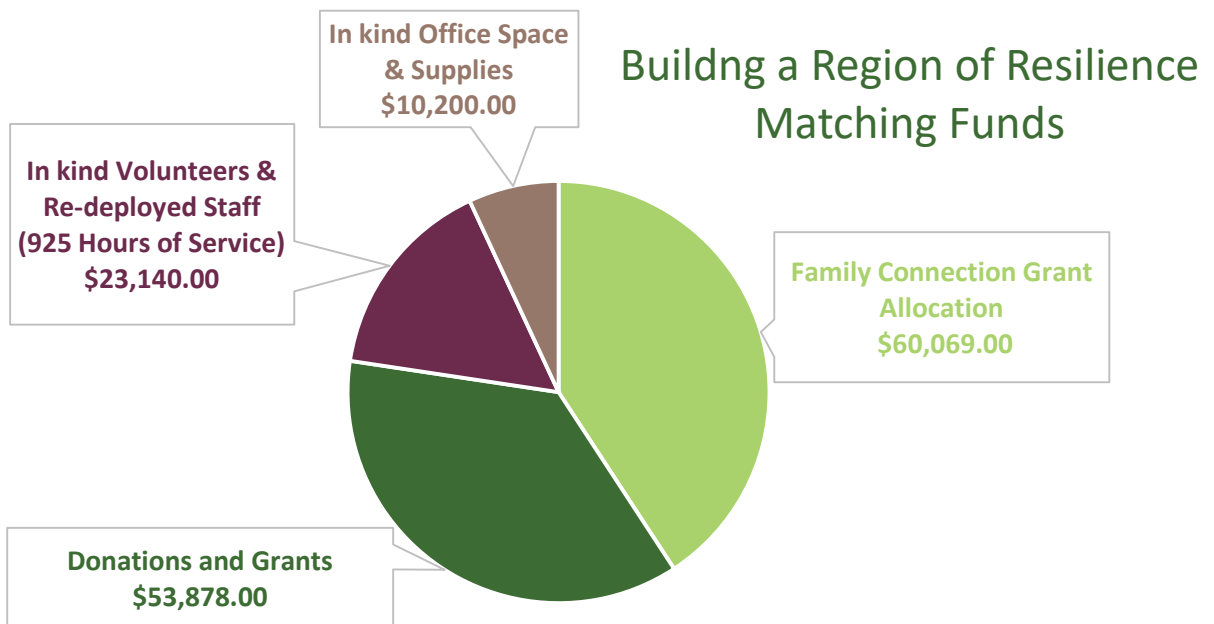
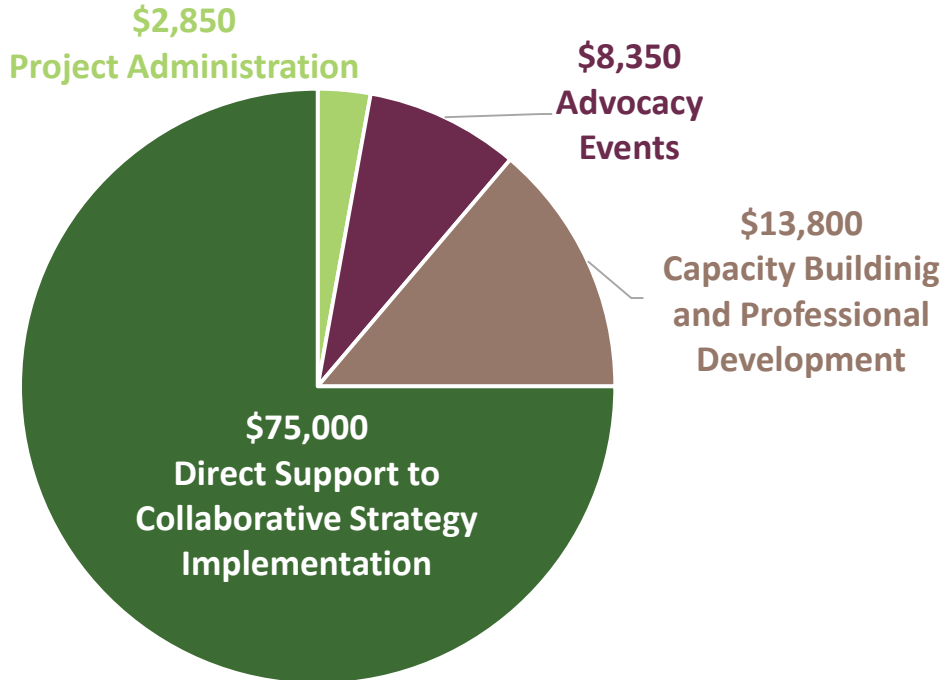
**Connect with a Region 1 Georgia Family Connection Collaborative:** Each of our collaboratives host monthly partner meetings and most utilized strategy teams and committees. Through links on the Join Us page of our website, you can access the collaborative's contact information, meeting dates and locations and other important information:  
<https://www.resilientnwga.org/join-us>.





## Income and Expenses/Financials

### Building a Region of Resilience Grant Expenses



*\*A full accounting of income and expenses can be found in Annex F: Project Budget Detail*





## Annex A: Capacity Building Activities

County	# Participants	Activity	Participant Types
Region	3	aha! Process - Bridges Out of Poverty Certification	BRR Leadership
Region	4	aha! Process – Bridges Out of Poverty Trainings	BRR Leadership
Region	4	aha! Process - Bridges Out of Poverty Workshops/book study	BRR Leadership
Whitfield	11	Brain 101 - DECAL Training	Collaborative Partners
Region	2	Community Resiliency Model	BRR Leadership
Region	7	Connections Matter Facilitator Training	BRR Leadership
Region	3	Connections Matter	BRR Leadership
Floyd	5	Connections Matter	Collaborative Partners
Gordon	9	Connections Matter	Collaborative Partners
Gordon	9	Connections Matter	Collaborative Partners
Pickens	28	Connections Matter	Collaborative Partners
Polk	1	Darkness to Light Facilitator Training	BRR Leadership
Whitfield	35	Dating Violence	Collaborative Partners
Region	16	GaFCP Race, Equity and Inclusion Training	BRR Leadership
Region	2	Georgia CSEC Webinar	BRR Leadership
Region	14	Georgia Family Connection Conference	BRR Leadership
Region	15	Head Bands and Budgeting Game Facilitation Training	BRR Leadership
Whitfield	35	Mental Health & BRR Overview	Collaborative Partners
Region	4	Mental Health 1st Aid and QPR	BRR Leadership
Catoosa, Chattooga, Paulding & Walker	78	Mental Health 1st Aid and QPR	Collaborative partners, strategy team members and board members
Fannin	19	Poverty 101 & Bridges Out of Poverty	Board Members and Volunteers



Floyd	26	Poverty 101 Workshop & Paper Tigers screening	Board Members and Volunteers
Region	13	Poverty 101 Workshop Facilitator Training	BRR Leadership
Region	5	Prevent Child Abuse Georgia Conference on Child Abuse & Neglect	
Region	16	REI Kids Count Data Tools Training	BRR Leadership
Region	14	Standards of quality for Family Strengthening Certificate	BRR Leadership
Floyd	1	Standards of quality for Family Strengthening Facilitator Training	BRR Leadership
Region	6	Strategy Implementation Trainings	BRR Leadership
Chattooga	7	Strengthening Families Framework	Collaborative Partners
Floyd	5	Strengthening Families Framework	Collaborative Partners, Families with children
Floyd	6	Strengthening Families Framework	Community Members
Floyd	36	Strengthening Families Framework	Community Members
Paulding	30	Strengthening Families Framework	Volunteers and school staff
Whitfield	36	TBRI - Correcting Principle	Collaborative Partners
Region	2	TBRI Practitioner Training	BRR Leadership
Region	15	Trauma 101 Workshop Facilitator Training	BRR Leadership
Whitfield	14	Trauma grant coaching session with DECAL	School, healthcare and community partners



## Annex B: Family Support Material Distribution

County Served	Materials Distributed	# Items	Activity/Event
Bartow	Backpacks and school supplies	2,000	Give a Kid a Chance
Catoosa	Medical disposal bags	6	Catoosa Prevention Initiative
Catoosa	Medicine safe giveaway	17	Catoosa Prevention Initiative
Catoosa	Pharmacy bag info cards - prescription abuse prevention	13,716	Catoosa Prevention Initiative
Chattooga	Children's books	444	Ferst Reader monthly book distribution to children 0 - 5
Chattooga	Car seats	100	Home for the Holidays
Chattooga	Gift cards for turkeys	150	Home for the Holidays
Fannin	Blankets	500	The News Observer drive
Fannin	Coats	700	The News Observer drive
Floyd	School supplies	200	Back to School Supply Drive
Gordon	Food gift cards	845	Christmas meals
Haralson	Thanksgiving Turkey	420	Thanksgiving food drive
Haralson	Food boxes	300	Action Ministries Food distribution
Murray	30lb food box and turkey gift card	100	Christmas meals
Murray	Food boxes	100	CareSource Community of Hope Support
Murray	School supplies and back packs	36	Tornado support
Paulding	Backpacks with 5 new books	281	Back to School Bash
Pickens	Dollar General pallets with household goods and supplies, clothing and toys	26	Rotary Club Dollar General give away
Pickens	USDA Farmers to Families Food boxes	2500	Food Distribution
Polk	\$600 gift cards	13	Grands Who Care - Christmas
Polk	Bicycles	13	Foster Care kids
Polk	Narcan dose distribution	500	Polk Against Drugs
Polk	Children's books	336	Ferst Reader monthly book distribution to children 0 - 5
Whitfield	Baskets of cleaning supplies	80	Community of Hope
Whitfield	Food boxes	80	Community of Hope
Whitfield	Toys, \$25 Kohl's gift card, Food City certificate, stocking stuffers	1200	Sharing is Caring -Christmas Campaign



## Annex C: Advocacy Activities

County	# Participants	Activity	Participant Types
Polk	32	Adult Recovery Ball	Community
Polk	75	Annual International Overdose awareness Day Activities	Community
Chattooga Polk	47	Child Abuse Awareness Month Activities	Collaborative Partners
Region	351	Civic Dinners: Nurturing Communities & Parenting in a Pandemic	Community & Collaborative Partners
Gordon	14	Community Mental Health Discussion	Collaborative Partners
Catoosa, Whitfield	47	COVID Townhall	Collaborative Partners
Region	4	DFCS Townhall Meeting	BRR Leadership
Whitefield	25	Domestic Violence Conversation	Collaborative Partners
Polk	50	Drive-through job fair	Community
Bartow	30	Early Learning Leadership Collaborative - virtual conference w/DECAL	Collaborative Partners
Catoosa	43	Economic Development Authority Presentation	Collaborative Partners
Pickens	32	Education response to COVID Discussion	Collaborative Partners
Whitefield	25	Emergency Housing Discussion	Collaborative Partners
Catoosa	40	Family Crisis Presentation	Collaborative Partners
Paulding, Pickens	56	Homelessness resources and discussion	Collaborative Partners
Whitfield	30	Homelessness Advocacy Committee	Collaborative Partners
Polk	12	Pancakes for Recovery	Community
Walker	30	Poverty & Trauma Discussions	Collaborative Partners & Community Members
Bartow, Gilmer	23	Poverty 101 Workshop	Rotary Club and Gilmer Volunteers
Murray	12	Poverty Discussion and Playspent Activity	Collaborative Board Members
Chattooga, Floyd, Haralson Polk, Walker	73	Poverty Discussion	Collaborative Partners & Board, Haralson Rotary & Lion's Clubs, Walker Chamber
Bartow	500	Poverty Panel	Cartersville School System Staff



Catoosa	20	Race, Equity and Inclusion Conversation	Collaborative Partners, Strategy Team and Board
Paulding	2	Red Ribbon Week	Collaborative Partners
Pickens	2175	Red Ribbon Week - proclamation signing and advocacy materials	Elementary and middle school students
Region	257	Resilience Screening and Trauma discussion	BRR Leadership, Collaborative Partners and Community Members
Catoosa, Chattooga, Dade, Walker	36	TBRI Overview	Collaborative Partners
Paulding	52	Trauma & ACEs discussion	Collaborative Partners
Polk	11	Trauma & Poverty Informed Approach discussion	Collaborative Partners
Bartow, Catoosa, Whitfield	104	Trauma 101 Workshop	Community Members
Chattooga, Fannin, Gordon, Paulding	89	Trauma Discussion	Community - Adults
Dade	5	Trauma Discussion & BRR Overview	Collaborative Partners
Bartow	20	Trauma-Informed/Responsive Book Discussion	School System Staff
Walker	50	Trauma/Poverty Discussion & BRR Overview	Collaborative Partners
Catoosa	42	Trauma Discussion - Root cause analysis	Collaborative Partners



## Annex D: Training Details

County	# Participants	Training Activity	Participant Types
Bartow	38	Darkness to Light/Stewards of Children	Community - Adults
Catoosa	33	Darkness to Light/Stewards of Children	Community - Adults
Dade	9	Darkness to Light/Stewards of Children	Community - Adults
Fannin	3	Darkness to Light/Stewards of Children	Community - Adults
Fannin	11	Darkness to Light/Stewards of Children	Community - Adults
Floyd	6	Darkness to Light/Stewards of Children	Community - Adults
Floyd	7	Darkness to Light/Stewards of Children	Community - Adults
Gilmer	6	Darkness to Light/Stewards of Children	Community - Adults
Haralson	11	Darkness to Light/Stewards of Children	Community - Adults
Murray	18	Darkness to Light/Stewards of Children	Community - Adults
Whitfield	19	Darkness to Light/Stewards of Children	Community - Adults
Haralson	10	GED Classes	Students - young adults
Walker	45	Mental Health First Aid	Community - Adults
Dade	9	Nurturing Parenting	Parents
Catoosa	4	Positive Parenting Classes	Children
Catoosa	10	Positive Parenting Classes	Children
Catoosa	11	Positive Parenting Classes	Parents
Catoosa	8	Positive Parenting Classes	Parents
Floyd	6	Parent Advisory Committee	Parents
Dade	13	Parent Cafe	Children
Dade	15	Parent Cafe	Parents/caregivers
Catoosa	14	QPR	Community - Adults
Catoosa	6	QPR	Community - Adults
Catoosa	23	QPR	Community - Adults
Chattooga	10	QPR	Community - Adults
Fannin	9	QPR	Community - Adults
Fannin	35	QPR	Community - Adults
Gordon	13	QPR	Community - Adults
Haralson	8	QPR	Community - Adults



Paulding	43	QPR	Community - Adults
Pickens	35	QPR	Community - Adults
Walker	5	QPR	Community - Adults
Murray	399	Virtual Teen Maze	10th grade students
Whitfield	2011	Virtual Teen Maze	10th grade students



## Appendix E: Mini-Grantees

<b>\$400 - 500 Grants</b>	
<b>Organization</b>	<b>Program/Service</b>
A Teen's Choice Inc.	4 week social-emotional development program - snacks and meals
Advocates for Children - Bartow	CASA Volunteer Training
Advocates for Children – Gordon	Volunteer training
Affirming U	Monthly mentoring program
Bartow Bookmobile	Books for summer program
Boys & Girls Club of North Georgia	Power Hour Program: tutors and supplies
CareLink	Supplies and nutritional drinks for seniors, and transportation
Cartersville City Schools	Mentor appreciation celebration
Chattooga Public Library	Materials for summer reading program
DFCS – Chattooga County	Welcome Baby Safety Kits
Ferst Readers - Paulding	Provide age-appropriate books for children under 5 years old - scholarships
Ferst Readers of Pickens County	Provide age-appropriate books for children under 5 years old
First Step Ministries, Inc.	Hope Works Initiative with Chattooga Co. Schools
Good Neighbor Homeless Shelter	Staff training
Highland Rivers - Pickens	Social Emotional expression tools for youth in the APEX program.
Hill City Elementary School (Counseling Department)	“Counselor CRAFT-tivities” connected to Life Skills/SEL Lessons.
North Georgia Family Partners	Parent Café program that provides resume building, budgeting, meal planning, healthy parent-child interaction, and other life skill
NWGA Family Crisis Center	Support to at risk or homeless children
Paulding Child Advocacy Center	Darkness to Light implementation
Paulding Co. Schools	Food pantry support
Recovery Bartow	Connections Matter implementation





Runaway Committee – Gordon	Mental health and substance abuse services for runaways
Summerville Main Street	Free interactive activities for families during Main Street Events
The Receiving Hope Center	Classroom materials
Three Circles Foundation	Materials for summer reading program
<b>\$1,000 Grants</b>	
<b><i>Organization</i></b>	<b><i>Program/Service</i></b>
Backpack Blessings – Walker	Weekend meals for school-age children
Craddock Center	Summer Reading Program
Destiny Independence USA	Educational supports to low-income youth
Ferst Readers of Gordon Co.	Provide age-appropriate books for children under 5 years old
Ferst Readers of Walker Co.	Provide age-appropriate books for children under 5 years old
Gilmer Food Pantry	Weekend feeding program for school-age children
Gordon Co. Child Advocacy Center	Support to child/families displaced due to domestic violence
Highland Rivers	Tools for in-school mental health supports via APEX
Kids Ferst	Provide age-appropriate books for children under 5 years old
Mountain Wisdom	Summer camp
New Beginnings	New shelter project
Walker County Schools - Heartbeat Fund	Payment relief and supplies for K-12 grade students
Whites Pediatrics	Resources (food, diapers) for families in need
<b>\$2,000 - \$2,500 Grants</b>	
<b><i>Organization</i></b>	<b><i>Program</i></b>
Helping Hands Ending Hunger, Inc.	Food and goods support
Salvation Army	Sharing is Caring



## Annex F: Project Budget Detail

### PROJECTED BUDGET from RFP VS. ACTUAL

Budget Item	RFP Budget Total	Year to Date	Balance
TBRI Practitioner Training	\$3,500.00	\$3,500.00	\$0.00
Capacity Building and Professional Development	\$10,110.00	\$10,301.60	(\$191.60)
Collaborative Programs & Services (Direct support to Region 1 Family Connection Collaboratives)	\$75,000.00	\$75,000.00	\$0.00
Zoom Virtual Meeting Platform - Project Admin	\$2,340.00	\$1,866.00	\$474.00
Global Impact - TBRI Simulcast - Advocacy Events	\$2,000.00	\$2,000.00	\$0.00
Civic Dinners - Advocacy Events	\$5,600.00	\$5,600.00	\$0.00
Resilience Screenings - Advocacy Events	\$750.00	\$750.00	\$0.00
Printed Materials - Project Admin	\$700.00	\$642.53	\$57.47
	<b>\$100,000.00</b>	<b>\$99,646.81</b>	<b>\$339.87</b>

RFP Budget Adjustments	Original Budget Amount	New Budget Amount
TBRI Practitioner Training was reduced by \$3,500 - due to a scholarship and refund for virtual implementation, the cost for training 2 participants was \$3,500. The balance was shifted to Capacity Building and Professional Development	TBRI Practitioner = \$7,000 Capacity Building and Professional Development = \$2,500	TBRI = \$3,500 Capacity Building... = \$6,000
"Resilience" screenings have been reduced to \$150 per viewing for a total of 5 viewings. By contracting this activity, we will no longer need to purchase the rights to the film and can reduce this budget line item by \$650 which will be reallocated to Capacity Building.	"Resilience" Screening = \$1,400 Capacity Building = \$6,000	"Resilience" Screening = \$750 Capacity Building = \$6,650
Received in kind contribution of printing and binders for Trauma and Poverty Workshop Facilitation training. Used \$124 to mail facilitation binders. Remaining balance for any additional postage or printing for regional meeting.	Printed Materials = \$3,760 Capacity Building = \$6,650	Printed Materials = \$300 Capacity Building = \$ 10,110
Unable to facilitate Civic Dinner in Gordon County, funds used for PTPN retreat	Civic Dinners = \$6,000 Printed Materials = \$300	Civic Dinners = \$5,600 Printed Materials = \$ 700



## PROJECT EXPENSES DETAIL – RESILIENT GEORGIA GRANT FUNDS

### Project Administration

Zoom Platform	\$	1,866.00	Yearly subscriptions for 11 counties
Printing and Postage	\$	325.53	Postage
Meetings	\$	269.02	Meals and materials
Fees	\$	48.00	Bank fees
Carry-over overhead for Year 2	\$	339.87	Funds will be used next year for bank fees, postage, and program supplies
	<b>\$</b>	<b>2,848.42</b>	

### Advocacy Events

TBRI® Simulcast Sponsorship	\$	2,000.00	Global Impact/Restoration Rome
Civic Dinners	\$	5,600.00	15 dinners implemented in 14 counties - meals, incentives, supplies
Resilience Screenings	\$	750.00	5 viewings of the documentary hosted by the Georgia Center for Child Advocacy
	<b>\$</b>	<b>8,350.00</b>	

### Capacity Building & Professional Development

TBRI® Practitioner Training	\$	3,500.00	Two practitioners trained - Doug Belisle (Lead Partner Rep), Gabrielle Stewart (Project Manager)
Connections Matter Facilitation Training	\$	3,500.00	6 Family Connection Executive Directors trained: Bartow, Catoosa, Gordon, Haralson, Paulding, and Walker
aha! Process	\$	1,790.12	6 Family Connection Executive Directors - Bridges out of Poverty Workshops/Trainings/Certifications: Dade, Fannin, Floyd, Gilmer, Pickens, and Whitfield
Better Brains for Babies	\$	70.00	2 Family Connection Executive Directors trained - Chattooga & Murray
Darkness to Light Facilitator Training	\$	450.00	Polk County Executive Director trained
Book Study Materials	\$	1,511.96	25 copies of The Body Keeps the Score, See Poverty...Be the Difference, and What Happened to You
Communication Across Barriers	\$	2,090.00	A set of Headbands and Budgeting Game kits for each county
Compassion Fatigue Initiative Incentives	\$	889.50	Gift cards for monthly giveaways for participation in self-care program FY21-22 school year
	<b>\$</b>	<b>13,801.58</b>	



## Direct Support to Family Connection Collaborative Strategy Implementation

### *Bartow Collaborative Inc.*

Mini grants	\$	3,000.00	6 mini grants distributed at \$500 each: Recovery Bartow, Advocates for Children, Good Neighbor Homeless Shelter, Bartow Bookmobile, Cartersville City Schools, Affirming U
Admin and General Operating	\$	2,000.00	Form builder/storage, general operating expenses, mailbox, printing and meeting supplies
		<b>\$ 5,000.00</b>	

### *Catoosa Co. Family Connection Collaborative*

Nurturing Parenting Classes	\$	4,660.00	Parent handbooks, program supplies, instructor, childcare, meals
Darkness to Light - Stewards of Children Training	\$	340.00	Facilitator and training materials
		<b>\$ 5,000.00</b>	

### *Chattooga Family Connection*

Ferst Readers	\$	1,500.00	38 Scholarships for monthly book distributions
Mini Grants	\$	3,000.00	6 mini-grants at \$500 each: A Teen's Choice, Inc., Chattooga Public Library, First Step Ministries, Inc., DFCS, Summerville Main Street, Three Circles Foundation,
Trauma Awareness Events	\$	500.00	Event space and materials
		<b>\$ 5,000.00</b>	

### *Dade First, Family Connection*

Foster family support	\$	993.81	Benevolence program for foster families
Community Benevolence	\$	994.73	Concrete support to low-income families in need (utilities, etc.)
Parent Cafés	\$	1,033.86	Meals and program materials for parents/caregivers and their children
Glow Run	\$	1,977.60	Child abuse and awareness community event - supplies, marketing, and t-shirts for participants
		<b>\$ 5,000.00</b>	



*Fannin County Family Connection*

aha! Process	\$	1,598.00	Bridges Out of Poverty training and certification
Travel	\$	132.84	Travel to and from Connections Matter facilitator training
Shop with a Cop	\$	145.00	Holiday gift boxes
Thanksgiving meals	\$	3,124.16	purchase of turkeys and side items for pantry families
	<b>\$</b>	<b>5,000.00</b>	

*Rome-Floyd Commission on Children and Youth*

Connections Matter Training	\$	750.00	Travel, lodging and meals
Family Fun Day	\$	2,200.00	Printing, marketing, and incentives for families
Scholarship	\$	250.00	Scholarship for soccer fees to Parent Ambassador
School Supplies	\$	378.00	Backpacks and school supplies for Community of Hope backpack drive
Parent Ambassador Committee	\$	422.00	School supplies for parent/caregiver participants
Sponsorship	\$	1,000.00	Program sponsorship for Destiny Independence, USA academic support program
	<b>\$</b>	<b>5,000.00</b>	

*Gilmer County Family Connection*

Mini Grants	\$	5,000.00	5 mini grants at \$1,000: New Beginnings, Kids Ferst, Craddock Center Summer Program, Gilmer Community Food Pantry, Mountain Wisdom Summer Camp
	<b>\$</b>	<b>5,000.00</b>	

*Family Connection of Gordon County*

Mini Grants	\$	1,000.00	2 mini grants at \$500: Advocates for Children, Gordon Co. Runaway Committee
Mini Grants	\$	4,000.00	4 mini grants at \$1,000: Gordon Co. Child Advocacy Center, Whites Pediatrics, Community Recovery Partnership (Highland Rivers) and Ferst Readers of Gordon
	<b>\$</b>	<b>5,000.00</b>	



*Haralson Coalition for Children, Youth and Families*

Haralson CASA	\$	500.00	Sponsored braces for a foster teen in program
Children in Need of Services	\$	500.00	Purchase of Chromebooks for students who needed a device for distance learning
Child Advocacy Center	\$	500.00	Darkness to Light Training
Action Ministries	\$	1,500.00	300 food boxes with Thanksgiving good items
Paxen	\$	500.00	2 laptops for GED students to check out and use when needed
Paxen Intern	\$	1,500.00	Intern to support Community Christian Council and Haralson Family Connection operations
	<b>\$</b>	<b>5,000.00</b>	

*Murray County Family Connection*

Murray Boys and Girls Club	\$	3,000.00	Scholarships for after school and summer program
Attendance Initiative	\$	1,001.00	Incentives and giveaways for students with 100% attendance
Community Awards Program	\$	999.00	Printing of awards and program materials
	<b>\$</b>	<b>5,000.00</b>	

*Paulding Family Connection*

Mini grant Program	\$	2,500.00	5 mini grants at \$500 each: Paulding County Schools, Ferst Readers, Receiving Hope Center, Child Advocacy Center and CareLink
Connections Matter Sponsorship	\$	2,500.00	Cost of 4 Connections Matter trainings implemented with 20 participants per session
	<b>\$</b>	<b>5,000.00</b>	

*Pickens County Family Connection*

Red Ribbon Week	\$	2,412.00	Program materials and incentives for participation in school-based activities
aha! Process Training	\$	88.00	Bridges Out of Poverty training
Mini Grants	\$	2,500.00	5 mini grants at \$500: Highland Rivers, Ferst Readers, Boys and Girls Clubs of North GA, Hill City Elementary School, North GA Family Partners
	<b>\$</b>	<b>5,000.00</b>	



*Polk County Council for Children and Families*

COVID supplies	\$	1,640.00	COVID cleaning supplies, personal protective equipment, etc.
Ferst Sponsorship	\$	1,000.00	25 scholarships for monthly book distribution
Child Abuse Awareness PSA/Marketing	\$	1,078.00	Purchase of promotional items and marketing materials
aha! Process	\$	1,282.00	Bridges Out of Poverty, facilitator training, poverty simulation, ProSolutions Trainings
	\$	<b>5,000.00</b>	

*Walker County Family Connection*

Mini Grants	\$	2,000.00	Helping Hands Ending Hunger, Inc. 3 mini grants at \$1,000 each: Backpack Blessings, Walker County Schools Heartbeat Fund, Ferst Readers of Walker Co.
Mini Grants	\$	3,000.00	
	\$	<b>5,000.00</b>	

*Dalton/Whitfield County Family Connection*

aha! Process	\$	1,364.00	Bridges Out of Poverty training and certification
Mini Grant	\$	2,500.00	Mini grant for Sharing is Caring holiday benevolence program
Mini Grant	\$	500.00	Mini grant to Northwest Georgia Family Crisis Center to support at risk or homeless children
Resilience Screening	\$	504.00	Hosting fee for Georgia Center for Child Advocacy and meal for participants
Trauma Meeting	\$	132.00	Meeting supplies
	\$	<b>5,000.00</b>	

**Total Expenditures**      \$      **100,000.00**



**MATCHING FUNDS DETAIL**

***Georgia Family Connection Grant Allocation***

\$ 4,150.00	Bartow
\$ 4,796.00	Catoosa
\$ 5,300.00	Chattooga
\$ 4,000.00	Dade
\$ 5,300.00	Floyd
\$ 5,300.00	Gilmer
\$ 5,300.00	Gordon
\$ 5,300.00	Haralson
\$ 5,300.00	Murray
\$ 2,900.00	Paulding
\$ 3,823.00	Pickens
\$ 3,300.00	Polk
\$ 5,300.00	Walker
<b>Total</b>	<b>\$ 60,069.00</b>

***Donations and Grants***

\$ 500.00	Bartow: Foundation gifts
\$ 1,000.00	Dade: Family Support Cohort Grant
\$ 1,200.00	Dade: Individual Contributions
\$ 5,722.00	Fannin: Corp/Foundation Grants - Glynda Ltd, Feed Fannin
\$ 2,561.00	Fannin: Individual Contributions
\$ 277.00	Pickens: Individual Contributions
\$ 22,100.00	Whitfield: Corporate Grants: Community Foundation, Shaw Foundation, Shaw Industries
\$ 20,518.00	Whitfield: Individual Contributions
<b>Total</b>	<b>\$ 53,878.00</b>

***Volunteers & Re-deployed Staff***

\$ 200.00	Bartow Volunteers: Civic Dinner, Trauma 101
\$ 600.00	Dade Volunteers: Community Awareness Activities
\$ 450.00	Fannin Volunteers: Civic Dinner, Poverty 101, Darkness to Light, Shop with a Cop





\$ 1,890.00	Whitfield Volunteers: Sharing is Caring
\$ 20,000.00	Georgia Family Connection Partnership Redeployed staff: Project Management
<hr/>	
<b>\$ 23,140.00</b>	

***In kind Office Space***

\$ 450.00	Bartow
\$ 1,400.00	Catoosa
\$ 1,000.00	Dade
\$ 750.00	Fannin
\$ 2,400.00	Paulding
\$ 1,200.00	Pickens
\$ 1,500.00	Polk
\$ 1,000.00	Whitfield
<hr/>	

***Total***      **\$ 9,700.00**

***In kind Supplies***

\$ 500.00	Polk
-----------	------

***Total Matching Funds***      **\$ 147,287.00**