



Resilient Georgia Regional Grantee 2024 Annual Report

Table of Contents

<i>About the Resilient Georgia Regional Grants</i>	2
<i>Coalition Mission</i>	2
<i>Summary</i>	2
<i>Leadership Team and Contributors</i>	2
<i>Coalition Partners</i>	4
<i>Key Impacts/Accomplishments</i>	5
<i>Description of Trauma-Informed Care (TIC) and Adverse Childhood Experiences (ACES)- Related Efforts</i>	5
<i>TIC/ACES Services – General (optional)</i>	8
<i>Prevention/Intervention</i>	5
<i>Advocacy and Policy</i>	7
<i>Training</i>	7
<i>Spotlight</i>	9
<i>Income and Expenses/Financials</i>	10



About the Resilient Georgia Regional Grants

[Resilient Georgia](#) has been working with 16 regions across Georgia to provide an emphasis on trauma-informed awareness and care, Adverse Childhood Experiences (ACEs) and child sexual abuse prevention training as a basis to transform systems and procedures crossing both public and private sectors.

- Resilient Georgia serves as a supportive and guiding resource during each region's planning and implementation process.
- These regional action plans each address the behavioral health needs of individuals birth through 26 years old and families in the community and surrounding counties using the Collective Impact framework (a diverse, robust and well-planned public-private partnership).
- Trauma-Informed Care, ACEs and child sexual abuse prevention can be the basis for systemic changes in a community. Each region has identified how one or more of these content areas are delivered to diverse community members through formal training, education, marketing and communications.
- Round 1 grants were awarded in Nov 2019 to regional coalitions based out of Athens, Augusta, Macon, Savannah and surrounding areas. Round 2 grants were awarded in July 2020 to regional coalitions based out of Albany, Columbus, Rome, Thomasville and surrounding areas. Round 3 grants were awarded in March 2021 to regional coalitions based out of Clayton, Cobb, Gwinnett, Valdosta and surrounding areas. Round 4 funding was awarded in December 2021 to regional coalitions based out of Atlanta, Brunswick, Gainesville, and Waycross and the surrounding areas.

Coalition Mission

The mission of Resilient Communities of Southeast Georgia is to create a resilient and responsive community with economic, social, and emotional supports for all. The initiative aims to create lasting change through a combination of education, innovation, service provision, and collaborative action. Focusing its efforts on strengthening communities in southeast Georgia, partners are working to create a shared understanding of adversity and resilience, promote trauma-informed practices, and advocate for policy and systemic change. Visit our website to learn more at www.rcosg.org.

Summary

Resilient Communities of Southeast Georgia brings together a cross-sector collaborative of stakeholders to strengthen communities in southeast Georgia by creating a shared understanding of adversity and resilience, promoting trauma-informed practices, and advocating for policy and systemic change through:



- Building awareness and a common understanding of adversity and resilience through the training of partners, community leaders, and practitioners in trauma-informed practices and ACEs prevention, reduction, and intervention strategies.
- Promoting coordinated trauma-informed practices across systems to address the systemic causes of ACEs in high-poverty communities, particularly those of color.
- Preparing future professionals to enter the workforce with knowledge of and skills in trauma-informed practices by providing training opportunities to students at College of Coastal Georgia, Schools of Education, Nursing, and Criminal Justice.

The coalition focuses its efforts on a 5-county region in southeast Georgia, consisting of both urban and rural communities. In an effort to maximize community impact and drive lasting change, the coalition utilizes evidence-based methods and targets three primary systems in the community – education, healthcare, and justice.



Education

Preschool/Headstart staff, public school teachers, counselors, and other support staff, k-12 students, and College of Coastal Georgia students/staff.

Healthcare

Physicians, nurses, and behavioral health professionals

Justice

Department of Family and Children Services, County and Municipal Police Departments, and the Sheriff's Office, Firefighters, Emergency medical technicians (EMTs) and Paramedics, 911 dispatchers, Juvenile Court staff, Guardian Ad Litem



Leadership Team and Contributors

Janelle Harvey

Director of Community Impact, United Way of Coastal Georgia

Strategic Partners

Steven Sainz, Camden Connection

Jason Umfress, College of Coastal Georgia

Family Connection of Glynn County

Dottie Bromley, Glynn Community Crisis Center

Senetra Haywood, Glynn County School District

Allie Christianson, Hope 1312 Collective

Leslie Hartman, Safe Harbor Center

Coalition Partners

Resilient Communities of Southeast Georgia

2024 Coalition and Community Partners



Community

- A Better Glynn
- Camden Connection
- Coastal Georgia Area Community Action Authority
- Communities of Coastal Georgia Foundation
- Faithful Love
- Faithworks Ministry
- Family Connection of Camden County
- Family Connection of Glynn County
- Family Connection of Liberty County
- Family Connection of Long County
- Family Connection of McIntosh County
- Family Connection of Wayne County
- Family Connection of Georgia - Region 12
- Salvation Army
- Salvation Army - Pathway of Hope
- United Way of Coastal Georgia

Health/Mental Health

- America's Second Harvest
- Camden Community Family Center
- Camden Crisis Center
- CASA Glynn
- Chatham County Safety Net Planning Council, Inc.
- Coastal Coalition for Children
- Coastal Community Health Services
- Gateway Behavioral Health
- Glynn Community Crisis Center
- Grace House
- Hope 1312 Collective
- HopeGivers Live!
- Safe Harbor Center
- Share Health Southeast Georgia, Inc.
- Southeast GA Health System

Education

- Boys and Girls Clubs of Southeast Georgia
- Coastal Outreach Academies
- College of Coastal Georgia
- Communities in Schools
- First Tee of Glynn County
- Glynn County School District
- Camden County School District
- Golden Isles College and Career Academy
- HeadStart
- STAR Foundation of Coastal Georgia
- YMCA of Coastal Georgia

Local/State Government

- City of Brunswick
- City of Brunswick Police
- Department of Behavioral Health and Developmental Disabilities (DBHDD)
- Department of Early Childhood and Learning (DECAL)
- Department of Juvenile Justice - Family Court Circuits
- District Attorney for the Brunswick Judicial Circuit
- Glynn County Department of Family and Children's Services
- Glynn County EMA
- Glynn County Police
- Glynn County Sheriff's Office



Key Impacts/Accomplishments

Coalition Building

The Resilient Communities of Southeast Georgia coalition has continued to expand throughout 2024. Additional partnerships have been established and awareness/support with stakeholders in education, healthcare, local and state government, judicial and law enforcement, elected officials, daycare, housing, employment, business, civic groups, and faith-based organizations has increased. We look forward to building additional capacity in 2025.



Resilient Communities of Southeast Georgia Resource Guide

A resource guide including child and family behavioral health state & local resources with service descriptions and contact information for the Camden, Glynn, McIntosh, Long, Liberty, and Wayne counties. It is meant to serve, inform & assist the coalition's partners, community members & local stakeholders. This resource guide has been co-produced by Resilient Georgia & Resilient Communities of Southeast Georgia.

Description of Trauma-Informed Care (TIC) and Adverse Childhood Experiences (ACES)- Related Efforts

Prevention/Intervention

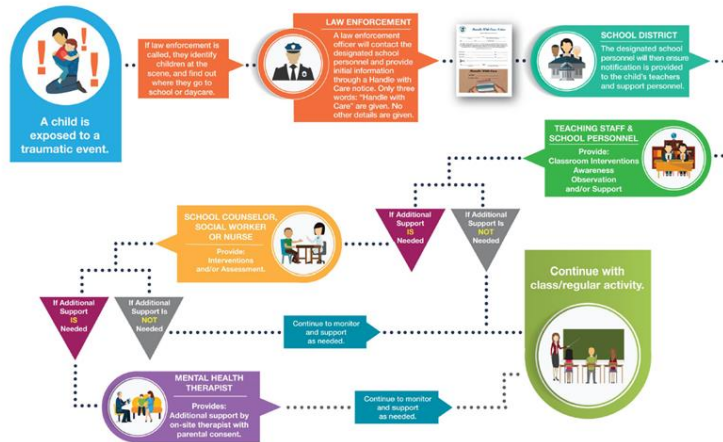
Handle With Care

The Handle with Care (HWC) program fosters collaboration among schools, first responder organizations, and mental health service providers. First responders alert school staff whenever a student is present at the scene of an incident so they can provide trauma-sensitive support. After beginning the implementation of Handle with Care in 2023 with Glynn County, Camden County joined the program in 2024. Trauma training (REALM) was provided to law enforcement and school personnel.



Some of the similar challenges include:

- Getting officers to remember and carry out the notification steps.
- Waiting for directives from the decision makers in the organizations to move forward.



VIA Connects

On March 9, 2024, Resilient Communities of Southeast Georgia was a sponsor of the VIA Connects *Radiate* Conference. The annual conference is an opportunity for women to connect on a deep level, share personal and professional growth strategies. The day long event was filled with motivating speakers, fun activities, and breakout sessions that ranged from Owning Your Power to Mind Over Matters to a very personal story of healing from Valerie Williams, an author, speaker, and survivor of domestic violence.

In addition to sponsoring the event and providing “scholarships” for nonprofit staff to attend, the coalition was represented in the panel discussion about the strength in coming together to accomplish change. To see highlights from the Radiate conference, go to <https://youtu.be/iH-Odhk5VEw>.

VIA Connects invites women to be brave by designing opportunities to hear powerful stories, learn valuable skills, discover tools that inspire growth, and build relationships. Sign up for our newsletter to receive updates & hear inspiring stories.

PANEL INFO

PANELISTS
 BRANDI LYDE-WHITEFIELD, A BETTER CLYDE
 JANELLE HARVEY, UNITED WAY OF CENTRAL GA
 MCKENZIE PADGETT, GOLDEN RULES REAL AUTHORITY
 YOLANDA NEELY, ST. SIMONS RADIO, INC

MODERATOR
 ANDE NOKTES, VIA

THEME:
 HOW TO CHANNEL OUR COLLECTIVE ENERGY TO STRENGTHEN OUR VOICES!



Charlton County 4H Summer Camp

The mission of Georgia 4-H is to assist youth in acquiring knowledge, developing life skills, and forming attitudes that will enable them to become self-directing, productive and contributing members of society. When a member of our Resilient Georgia cohort asked us to contribute to send 32 low income, Charlton County 4H students to a skill-building summer camp, we jumped at the chance! Not only did we provide the resources to cover the expenses for the summer camp, we also went to Charlton and built “Resilience Bags” for each camper to take with them and “Inspiration Bags” for each of the adult volunteers that gave of their time to support this amazing opportunity for children.



Advocacy and Policy

Resilient Communities of Southeast Georgia is actively engaged in advocacy activities with multiple organizations in Coastal Georgia.

- Coastal Georgia Homeless Coalition
- Glynn County Behavior Health Collaborative
- Southern Regional Community Collaborative
- Glynn County Local Emergency Planning Committee
- DECAL Stakeholders Focus Group with Civitas Strategies
- Gang prevention planning with District Attorney’s office

Training

Overview of 2024 Trainings





Community Resiliency Model (CRM)/REALM Training

Resilient Communities of Southeast Georgia organized 1 Community Resiliency Model Training and 1 REALM Training in 2024. R.E.A.L.M. is an evidence-informed program that supports skills-building in the 3 realms of resilience: individual, interpersonal, and organizational. It is designed to promote sustainable well-being and create more engaged, connected, and caring communities. R.E.A.L.M. teaches participants to build resilience through a variety of mind-body principles and self-leadership strategies to help reduce personal and collective stress and enhance quality of life. R.E.A.L.M. is offered for first responders, healthcare professionals, educators, government workers, and community members.

- June 6, 2024 – First responders and additional City/County personnel – 3-hour training of the Community Resiliency Model for 17 first responders.
- August 23, 2024 - First Responders in Camden County as well as school personnel – 1 hour overview of CRM/REALM for 17 first responders and school personnel.

Community Emergency Response Team (CERT) Training

Launching in January of 2024, the Glynn County Community Emergency Response Team (CERT) training program marks a significant stride in enhancing the community's resilience in the face of emergencies and disasters. The seven-week training provides citizens with knowledge and skills needed when faced with an unexpected crisis or disaster, empowering them to safeguard themselves, their families, and support neighbors.

Additionally, CERT training strengthens local communities by building capacity. Citizens invest their time in acquiring essential emergency response skills through the CERT program, contributing to a safer community. The curriculum covers preparedness, fire suppression, disaster medical operations (including triage, life-threatening injury treatment, etc.), light urban search and rescue, radio operations, team organization, and disaster psychology.

The CERT program is a partnership with the City of Brunswick and is enriched by certified and seasoned instructors from key agencies, such as Glynn County EMA, Glynn County Fire Rescue, Glynn County Police Department, City of Brunswick Fire, City of Brunswick Police Department, Community Church, Glynn County Amateur Radio Club, and United Way of Coastal Georgia. This collaboration not only ensures high-quality training but also fosters relationships and information exchange among emergency response agencies and volunteers.

Other trainings offered:

- Connections Matter
- Handle With Care
- Mandated Reporter Training



- Mindful Self-Compassion (MSC)
- Prevent Now! Workshop
- Stewards of Children
- Trust-based Relational Intervention – we are open to providing this training when it is not cost-prohibitive.

Spotlight

McIntosh School District/Carter Center – School Based Mental Health Planning

In April, 2023, a collaborative meeting was organized to discuss the increasing mental health needs of students in McIntosh County, GA. Participants included McIntosh County School District, the Carter Center, Voices for Georgia’s Children, Georgia Appleseed, Resilient Georgia, United Way of Coastal Georgia, and Coastal Community Health Services. Discussion centered around the increasing need for additional mental health services, barriers to accessing services, and the feasibility of establishing a school-based mental health clinic.

Based on those initial discussions, Coastal Community Health and McIntosh School District joined forces to establish the Tiger Clinic, McIntosh’s first school-based health clinic. This clinic provides access to much needed health services while addressing barriers like lack of transportation.



February 2024 grand opening of the Tiger Clinic, McIntosh School District’s school-based health clinic.



Income and Expenses/Financials

Resilient Communities of Southeast Georgia 2024 Budget Report

		2024 Budget	YTD Income
Income	Grants		
	<i>Resilient GA</i>	\$200,000	
	Individual Contributions		
	Foundation/Corporate Support		
	In-Kind Support		
	<i>UWCGA - Personnel In-Kind Contribution</i>	\$20,000	
		\$0	
	Total	\$220,000.00	\$0.00
		2024 Budget	YTD Expense
Expenses	Capacity-Building Programming	\$110,000.00	
	<i>Coalition Building/Recruitment</i>		\$145.59
	<i>Collaborative Meeting/Planning</i>		
	<i>Trainings</i>		\$8,085.47
	<i>Kindness Grant Program</i>		
	<i>Train the Trainer Program</i>		
	Resilient GA 5% Fee	\$10,000	
	Management/Administration		
	<i>UWCGA Administration</i>	\$25,000	
	<i>Project Coordinator</i>	\$25,000	0
	Marketing	\$30,000	
<i>Awareness/Promotion</i>		4652.74	
<i>Events - TBD</i>		1756.94	
	Total	\$200,000	\$14,641